



Lyndale Court News

Volume 8, Issue 4

April 2009

INSIDE THIS ISSUE:

Family Support	2
Walk for Autism	2
Tenant Corner	2
Resource Corner	3
Health Tip	3
Resident Manager	3
Calendar	4

Games with SVTC

Celebrate the spring and Easter season by joining the Single

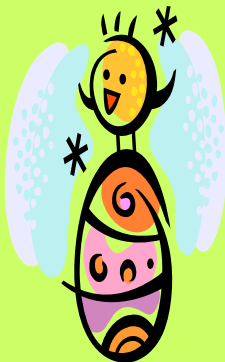
Volunteers of the Twin Cities for a night of fun-filled games! We will play Yahtzee and BINGO. Game Night will be held in the community room on

Thursday, April 2nd at 6:30pm. Prizes go to all

game winners! Snacks will be provided. Hope to see you all there!



Happy Easter!



Social Hour

It's time for the monthly social hour! Join the Service Coordinator along with your neighbors for social time in the community room.

Social Hour will take place in the community room from 4:00-5:00pm on Thursday, April 23rd.

Court Support Group

next meeting for the Court Support Group is scheduled for Wednesday, **April 22nd from 7:00-8:00pm** at Sheridan Court, 2500 West 66th Street, Richfield, MN 55423.. The Court Support Group for families is a gathering of

family members of tenants living in Fraser's apartment buildings. The general purpose of this group is to network with other families, discuss ideas and concerns about buildings and programs,

and to help find or develop services that are being lost due to budget cuts. At the April 22nd meeting, Chief Executive Office of Fraser, Diane Cross and Chief Development Officer, Gary Wagner will be giving a short presentation on planned giving. Please contact Holly Reinsmoen at 952-888-6065 if you have any questions.



Fraser Walk for Autism

Do you want to help people receive more services? Join the Fraser Walk for Autism, sponsored by GMAC Financial Services. The walk will be held at the Mall of America on

Saturday, April 18, 2009.

Registration is from 7-8am and the walk begins at 8am. Register online at www.fraser.org/calendar or contact Rose at 612-798-8343 for more information.



Tenant Corner

By: Arnie Eldal

I would like to let my fellow tenants at Lyndale Court know about the important days in April.

April Fools: April 1st

Palm Sunday: April 5th

Holy Thursday: April 9th

Good Friday: April 10th

Easter Sunday: April 12th

Easter Monday: April 13th

Tax Day: April 15th

Let me also say that I appreciate the monthly newsletter we receive at Lyndale Court.

Live Life to the Fullest Every Day!

I would like to my fellow tenants at Lyndale Court that we should live to the fullest every day. Many of us are REM Hennepin consumers and receive SILS services, but we are also all Fraser tenants. Since life has so much to give us, let us enjoy it each and every day we are able to. Let us also count our blessings which we are fortunate to have.

Community Resource Corner

The community resource for April is **Lutheran Social Services (LSS)**. LSS offers residential, in-home & respite care services, guardianship/conservatorship services, camp services, and community support services.

For people with developmental and physical disabilities, LSS offers residential living services, care and support for people in their own homes, and respite services for primary caregivers. LSS also offers services as court-appointed guardian/conservators when people are not able to

make decisions about their care, living circumstances, or finances.

Camp Knutson is a camp run by LSS that is open to groups in the spring, summer, and fall. Camp Knutson is located near

Crosslake, MN and serves people with disabilities.

Partners in Community Supports (PICS) is a subsidiary of LSS and serves individuals with disabilities, the elderly, people affected by brain injury, and their families who choose the Consumer Directed Community Support (CDCS) option. PICS helps its clients

coordinate the many financial processing and billing tasks involved with CDCS.

If you would like more information on any of the services provided through Lutheran Social Services, please call (651) 642-5990.

Health Tip

From: Bloomington Public Health
Be Aware of Urinary Tract Infections

In older people, symptoms of a urinary tract infection (UTI) may include:

- Confusion
- Agitation
- Restlessness

- Decreased level of consciousness
- Lethargy
- Falls

If you or a loved one has some of these symptoms, talk to your doctor about the possibility of a urinary tract infection.



Roles of the Resident Manager

Please keep in mind the responsibilities of the resident manager.

At Sheridan Court, Sandi will:

- Help in emergency situations when she is home.
- Be available 10 hours per week for residents to contact her.
- Help tenants when they are locked out of their apartments.
- Plan one social event each month and

have tenant meetings four times per year.

- Be responsible for cleaning the common areas of the building. (Remember-if you use the community room, you are responsible for taking care of your own mess!)
- During the winter, will remove snow and salt when needed.
- Assist the Property Manager with some duties.

Sandi is **not** expected to:

1. Fix personal equipment.
2. Move furniture.
3. Provide transportation.
4. Tend to maintenance requests.
5. Give out tenant/family phone numbers.
6. Let people into the building that do not live at Sheridan Court.

April 2009

Sun	Mon	Tue	Wed	Thu	Fri	Sat
			1	2 Game Night with SVTC 6:30pm	3	4
5	6 Learning Exchange	7	8 Cub Club	9	10	11
12 Happy Easter!	13	14	15	16	17	18 Fraser Walk for Autism
19	20 Faith & Light	21	22 Cub Club	23 Social Hour 4-5pm	24	25
26	27	28 Room Reserved 2-5pm	29	30		

